

SB, SPINDLE BOLT, K750, K760, K760II, K950, K960, K970, K970II, K970III, K1250, K1260, K1270, K6500, K6500II, 2017-02

SYMPTOM/DESCRIPTION

As the magnesium blade guards have been phased in, the dimension of the spindle bolt has been changed from M8 to M10.

This change of the threads will not be implemented on all models at the same time so there will be a transition period when both M8 and M10 exist simultaneously.

Keep this in mind when ordering parts related to the bearing housings and the spindle shaft.

AFFECTED UNITS

Screw

Feature	New	Old
P/N	588 65 57-01	581 85 52-01
Key width	13mm	13mm
Colour	Black	Silver
Entering zone	Yes	No



Picture 1: New screw



Picture 2: Old screw

Flange Washer

Feature	New	Old
P/N, 105mm	583 87 44-02	506 02 87-01
P/N, 119mm	506 07 09-02	506 07 09-01
Double D width	13mm	12mm
Colour	Black	Silver



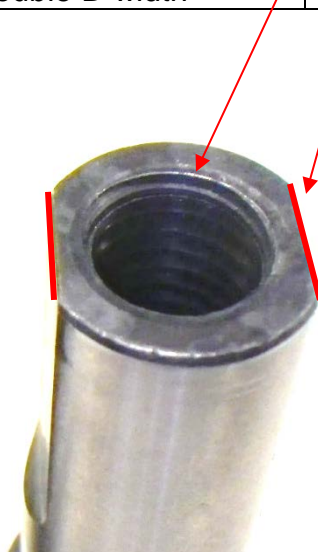
Picture 3: New flange washer



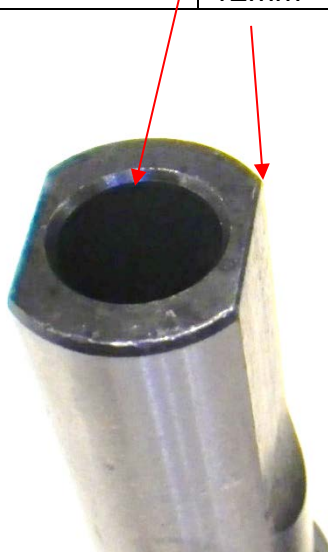
Picture 4: Old flange washer

Spindle Shaft

Feature	New	Old
P/N	588 99 24-01 (Bolt included)	506 29 83-65 (Bolt included)
Internal thread	M10	M8
Double D width	13mm	12mm



Picture 5: New spindle shaft



Picture 6: Old spindle shaft